

EMER®

CASE STUDY

ST GEORGE'S HALL NEWTOWN NSW AUSTRALIA



CONTRACTOR

Let's Build NSW

SECTOR

Heritage Buildings

DATE

May 2020

PRODUCTS

- Emer-Clad Facade
- Emer-Patch High Build



THE PROJECT

St George's Hall is a heritage listed building situated in Newtown NSW and was constructed in the late 1800s. The building is now part of the Newtown High School for Performing Arts, and a recent refurbishment program for the school included scheduled works to paint the external building facade. The building was in desperate need of remedial repairs and restoration to preserve and protect the distinct characteristics of St George's Hall. The many ornate elements of the building are areas where water can pool and enter its way into the substrate causing significant damage.

THE SOLUTION

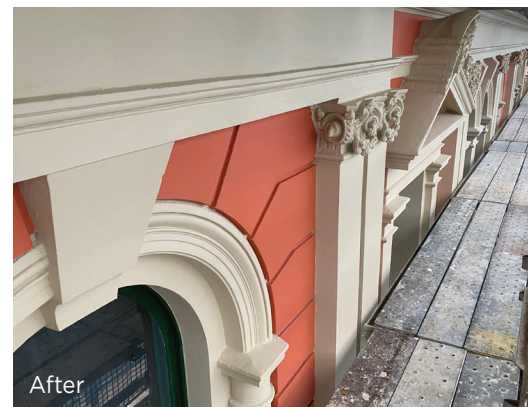
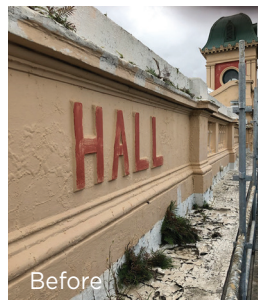
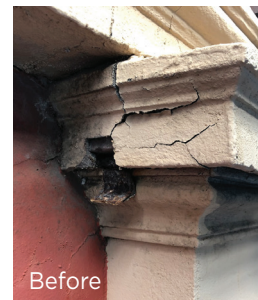
After conducting a site visit with the contractor, we created a detailed project specification, providing a substrate repair and coating system that would restore the deteriorated external facade and offer maximum long-term protection.

Due to the number of ornate elements requiring repair Emer-Patch High Build was used, as it is ideal for undertaking overhead and vertical repair work due to its lightweight and easy to use properties.

Once the repair work was completed, Emer-Clad Facade was applied due to its excellent waterproofing properties and high flexibility. It also provided a decorative finish that matched the existing heritage colours of the building.

BENEFITS

- Emer-Clad Facade is a high build protective and waterproof coating providing protection from water ingress and aggressive environmental elements
- Emer-Clad Facade is a highly flexible coating and can accommodate movement of pre-existing cracks of up to 1mm
- Emer-Clad Facade is Dulux tint aligned, providing a total colour solution
- Emer-Patch High Build is designed for concrete repairs where its light weight nature and high build characteristics makes it ideal for vertical and overhead concrete repair work



emer.com.au

E: enquiries@emer.com.au
1956 Dandenong Road, Clayton VIC 3168 Australia

1300 283 668

Emer and all Emer products are registered trade marks of Parchem Construction Supplies Pty Ltd.