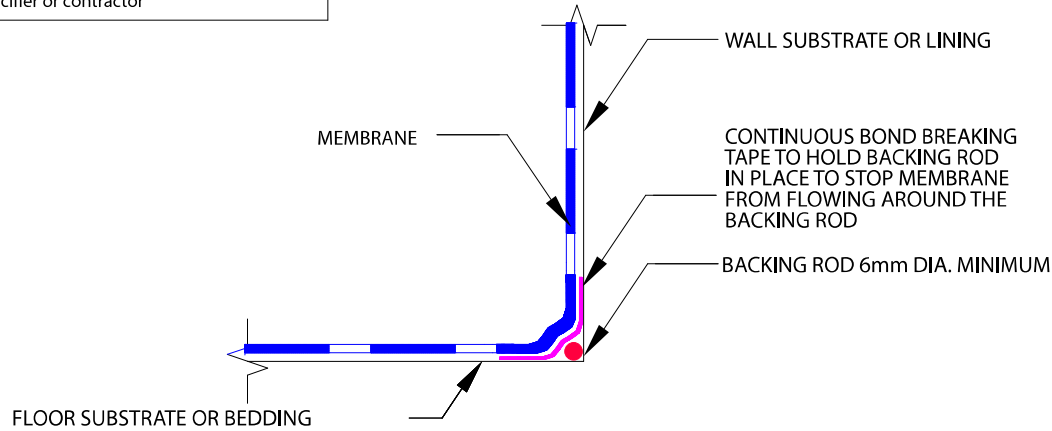
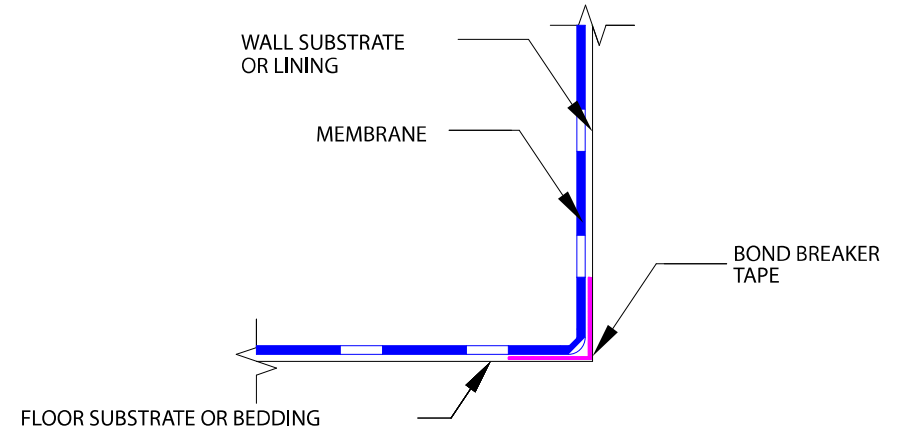


As suppliers of building and civil engineering products Parchem Construction Supplies Pty Ltd do not offer a design service. Information in this drawing is a suggestion only and must not be used for construction except as a signed off drawing by the specifier or contractor

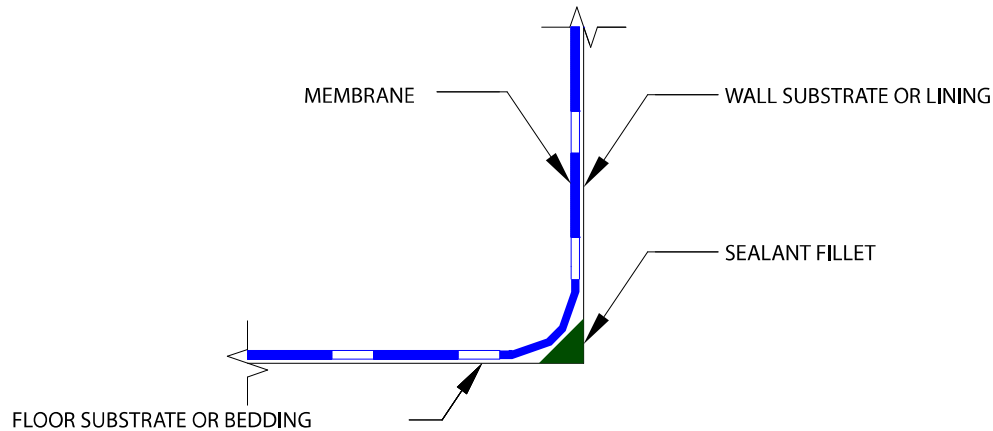
TYPICAL BOND BREAKER DETAIL FOR CLASS I MEMBRANES



TYPICAL BOND BREAKER DETAIL FOR CLASS II MEMBRANES



TYPICAL BOND BREAKER DETAIL FOR CLASS III MEMBRANES



APPROPRIATE BOND BREAKER - AS PER TABLE 3.2 AS:3740:2010

| MEMBRANE CLASS | ELONGATION AT BREAK | MINIMUM BOND BREAKER / TAPE WIDTH TO BRIDGE JOINTS OPENING UP TO 5mm |
|----------------|---------------------|--|
| I | <60% | 75mm WITH BACKING ROD |
| II | 60% TO 300% | 35mm |
| III | >300% | 12mm |

TYPICAL FLOOR TO WALL BOND BREAKER DETAILS:
CLASS I; CLASS II; AND CLASS III MEMBRANES

SCALE:- NTS

DRAWN BY:- MN

DATE:- 16-7-13

LATEST AMENDMENT:- PJ

DATE:- 12/08/2019

ISSUE NUMBER 3



PARCHEM CONSTRUCTION SUPPLIES
7 LUCCA ROAD, WYONG
NSW 2259
www.emer.com.au
1300 283 668